

PUA di R

Piano Urbanistico Attivato di Recupero
(art. 31, comma 2°, lettera d) della LR 24-03-2000,
n. 20 e successive modif. ed integr.)
COMPARTO: "AR.9 - VIA ALLENDE

Proprietà: NUOVA MODA IMMOBILIARE SPA

3A STUDIO TECNICO Arch. Eva Tintoni

47841 Cattolica - via XX Settembre 14 C.F./Partita IVA 04633880456 Tel./Fax 0541 954234 Email info@3studio.it

11.2

PROGETTO:
Sistema planimetria generale: soluzioni "A-1"
ACE 3 - ACE 4

DATA 03/03/2022
SCALA 1:1000 - 1:200

NOTA: LE PROPOSIZIONI SONO SOLO A TITOLO DI ESERCIZIO INFORMATIVO. IL PROGETTO È SOLO PRELIMINARE E NON HA VALORE VINCENTE. I CONTENUTI SONO SOLO A TITOLO INFORMATIVO. I CONTENUTI SONO SOLO A TITOLO INFORMATIVO. I CONTENUTI SONO SOLO A TITOLO INFORMATIVO.



PLANIMETRIA GENERALE
SCALA 1:1500

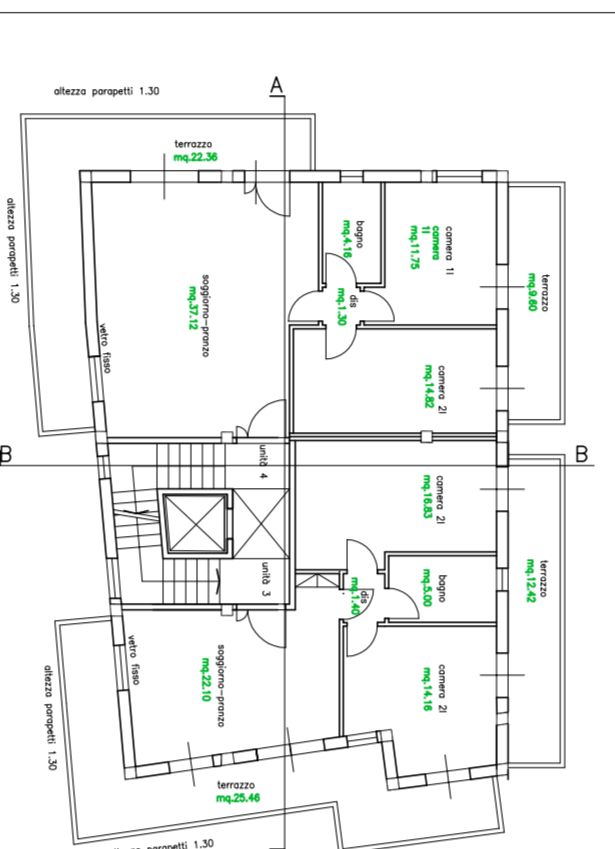
SCHEMI TIPOLOGICI (SCALA 1:200) - "ACE 3"



PIANO SEMINTERRATO



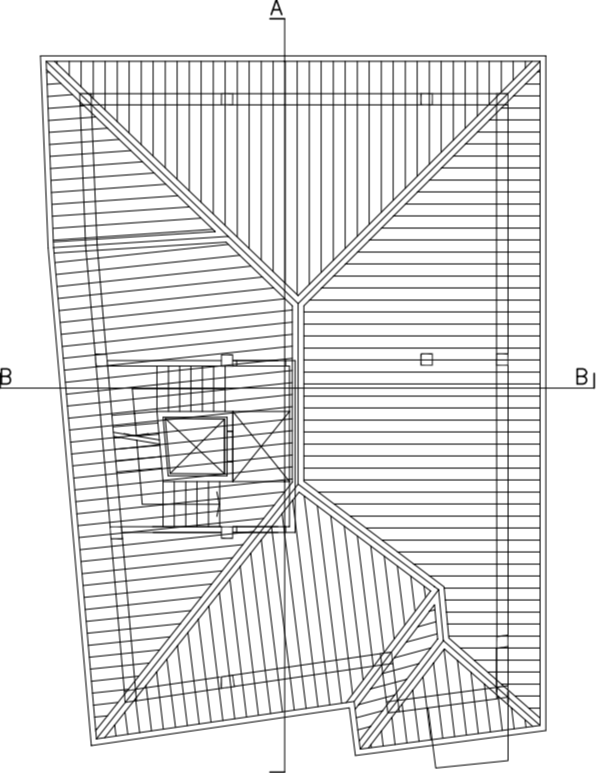
PIANO RIALZATO



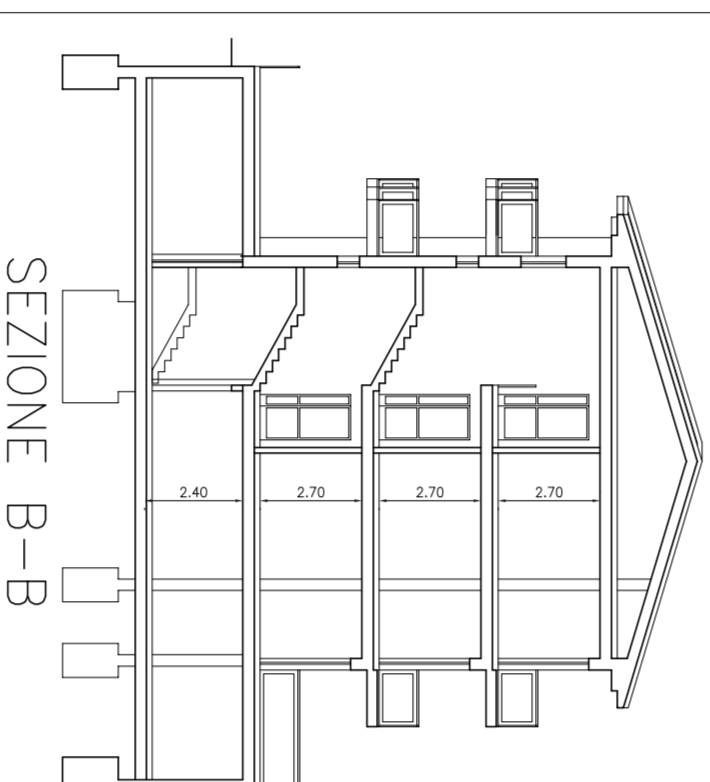
PIANO PRIMO



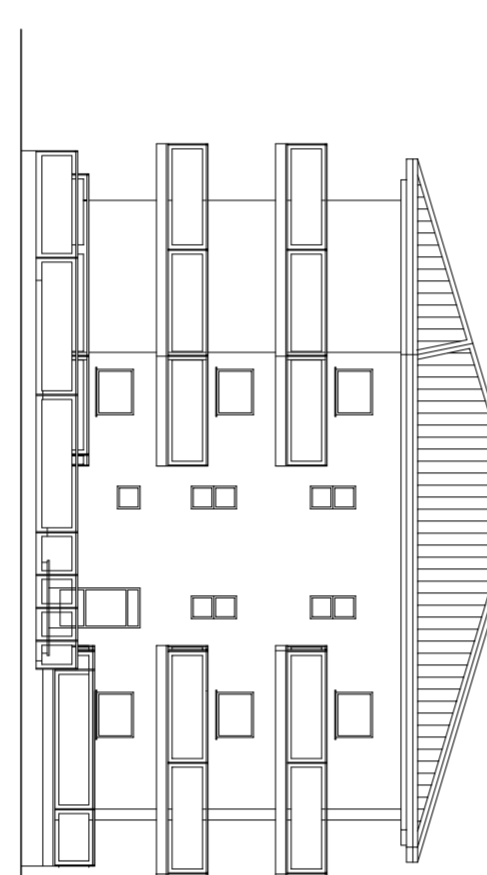
PIANO SECONDO



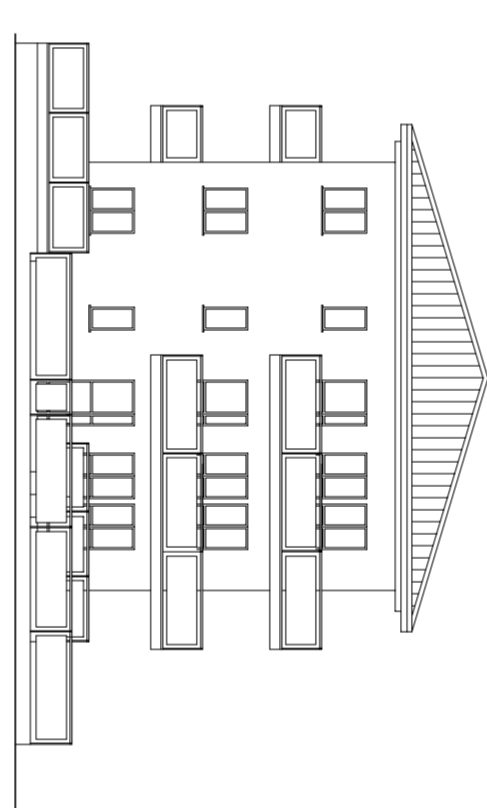
PIANTA COPERTURA



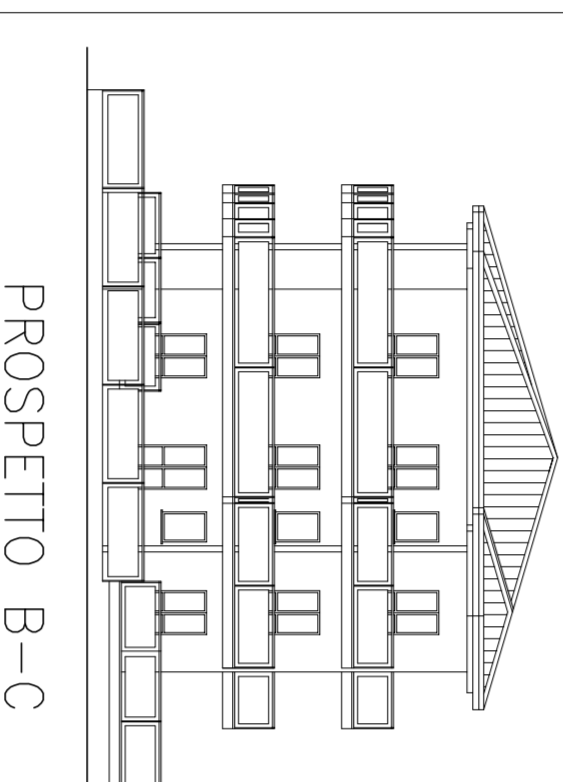
SEZIONE B-B



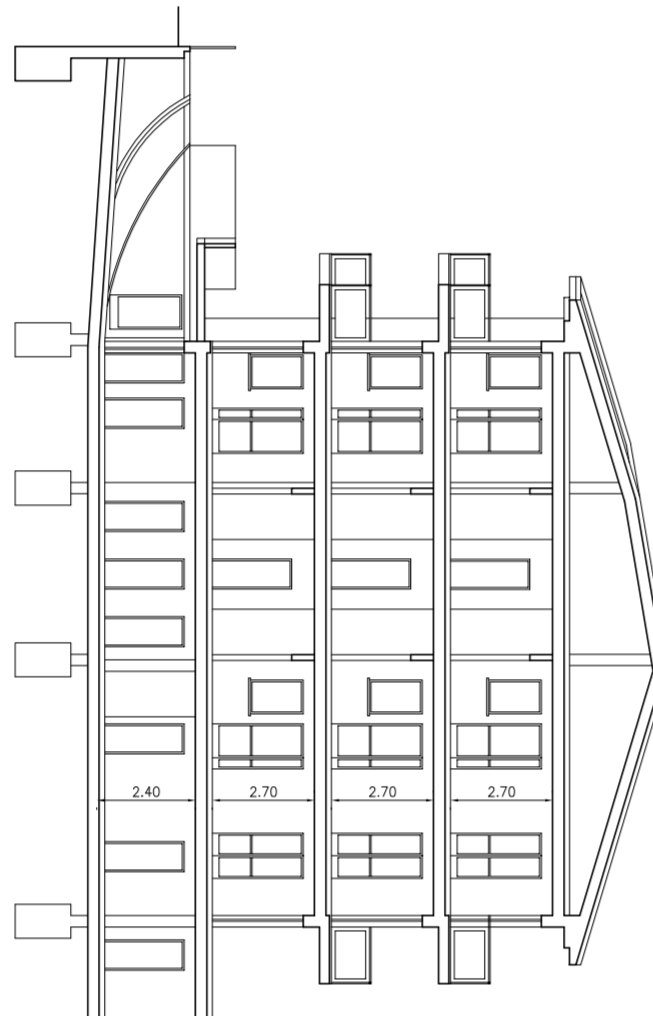
PROSPETTO A-B



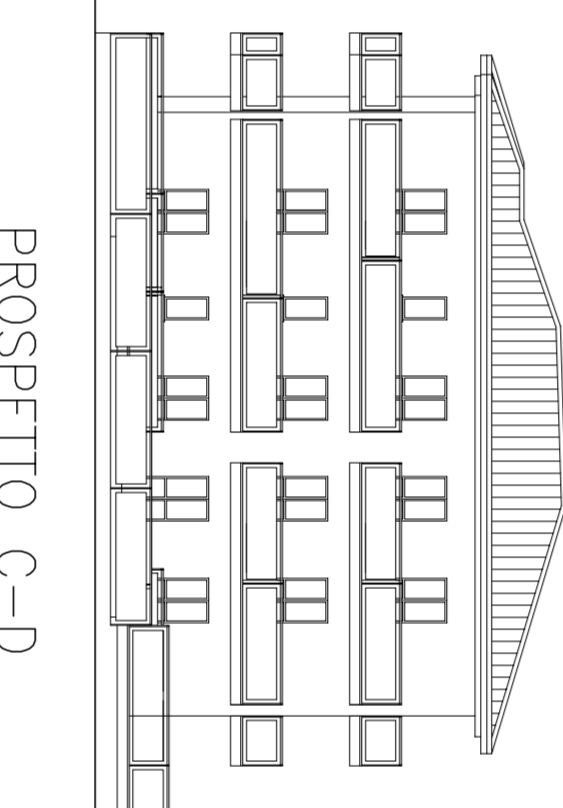
PROSPETTO D-A



PROSPETTO B-C



SEZIONE A-A

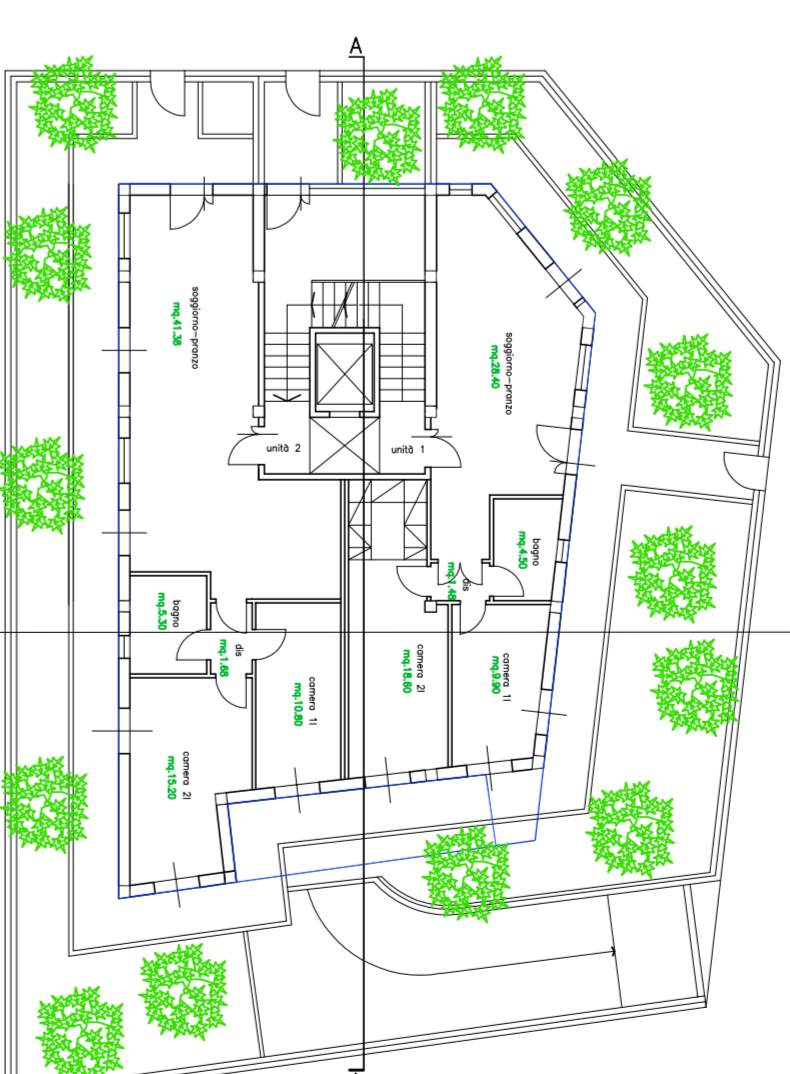


PROSPETTO C-D

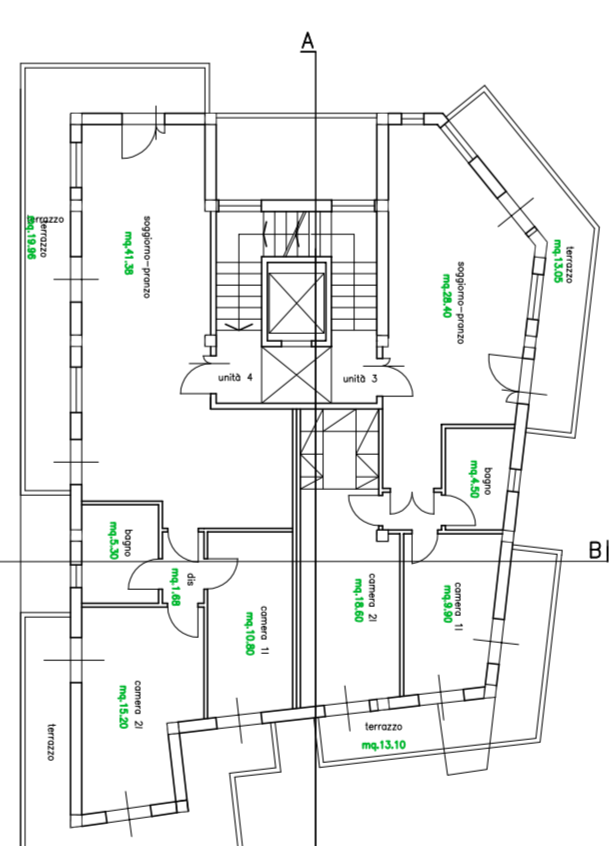
SCHEMI TIPOLOGICI (SCALA 1:200) - "ACE 4"



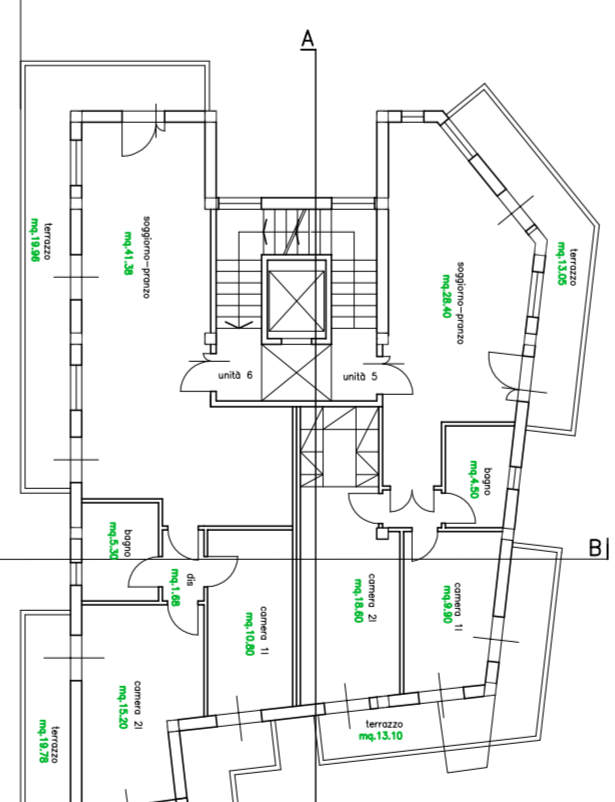
PIANO SEMINTERRATO



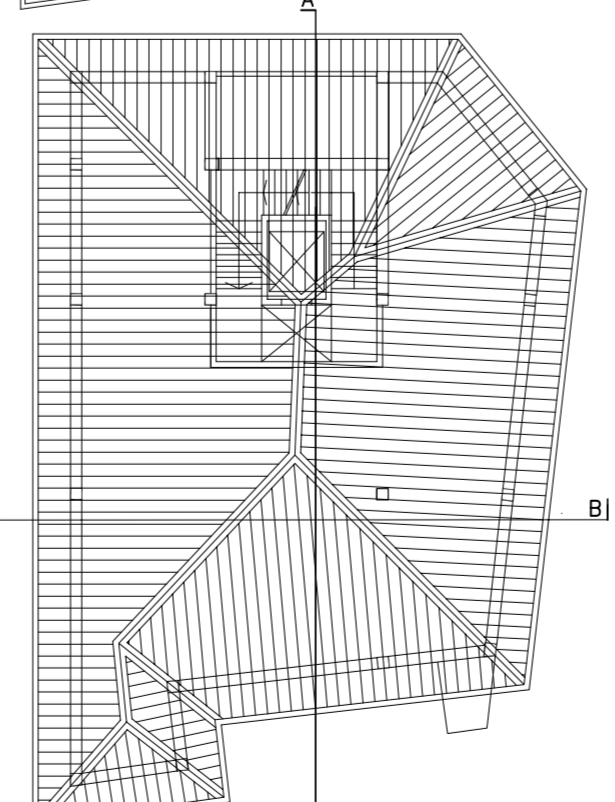
PIANO RIALZATO



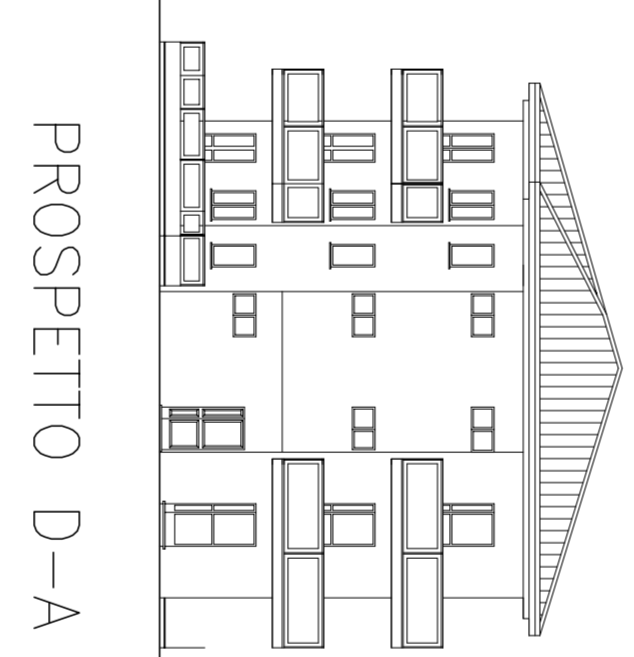
PIANO PRIMO



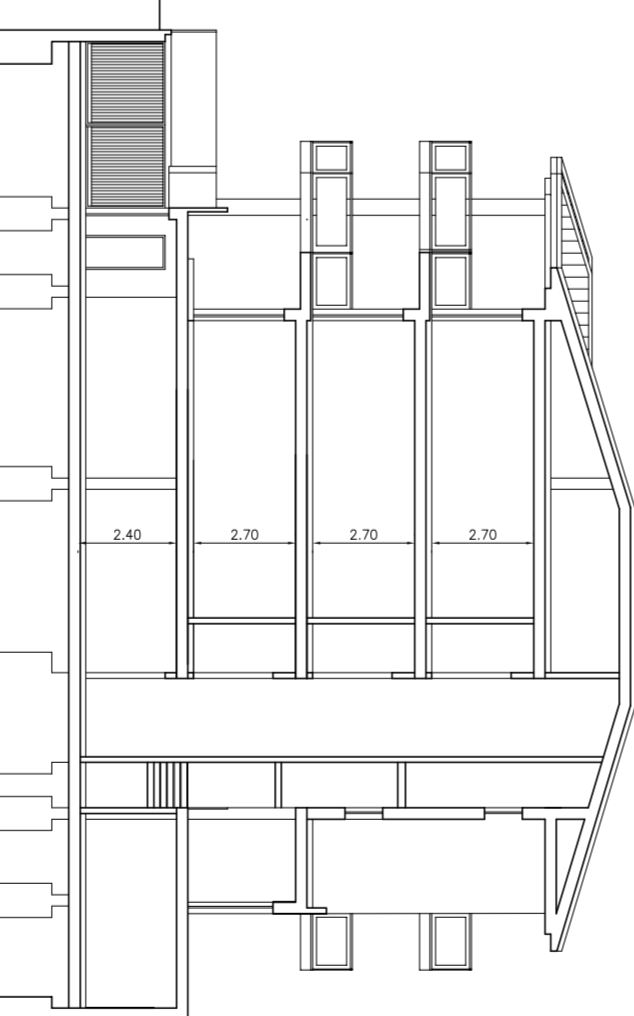
PIANO SECONDO



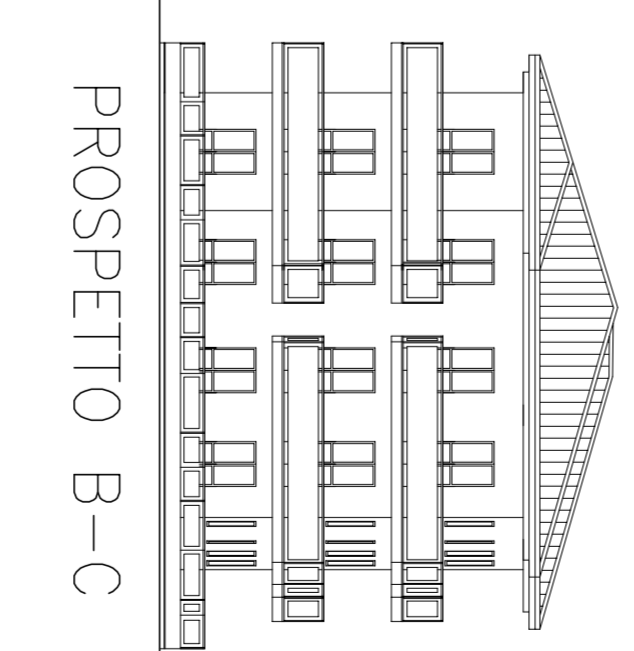
PIANTA COPERTURA



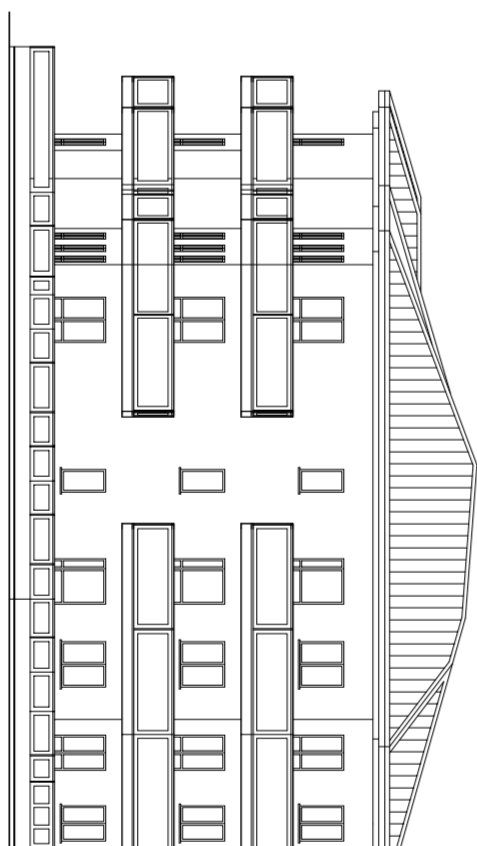
PROSPETTO D-A



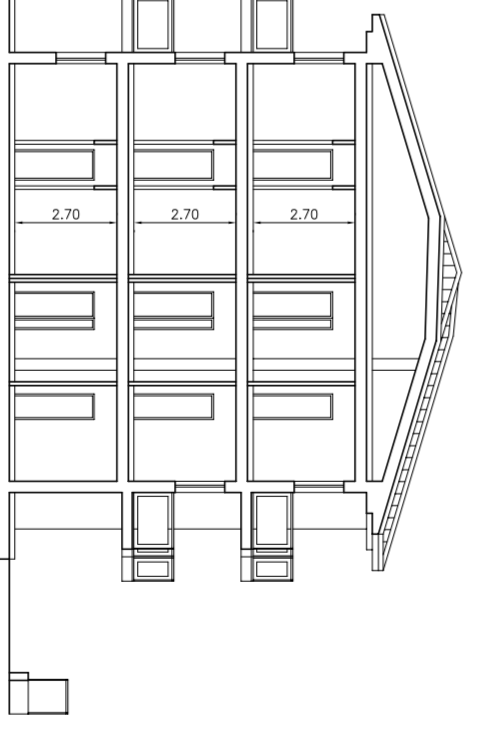
SEZIONE SCHEMATICA A-A



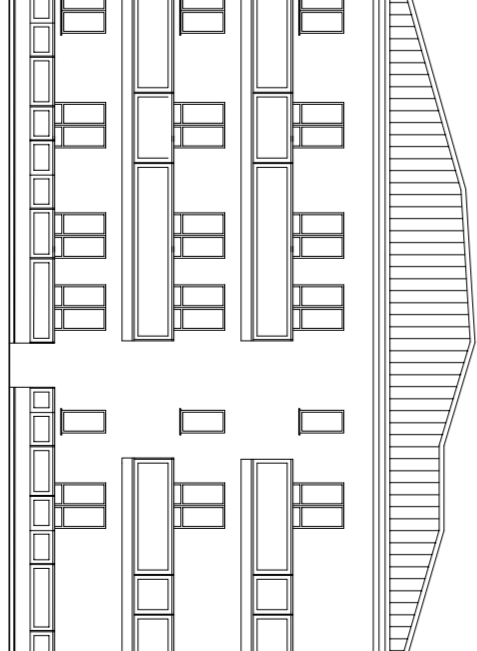
PROSPETTO B-C



PROSPETTO C-D



SEZIONE SCHEMATICA B-B



PROSPETTO A-B